

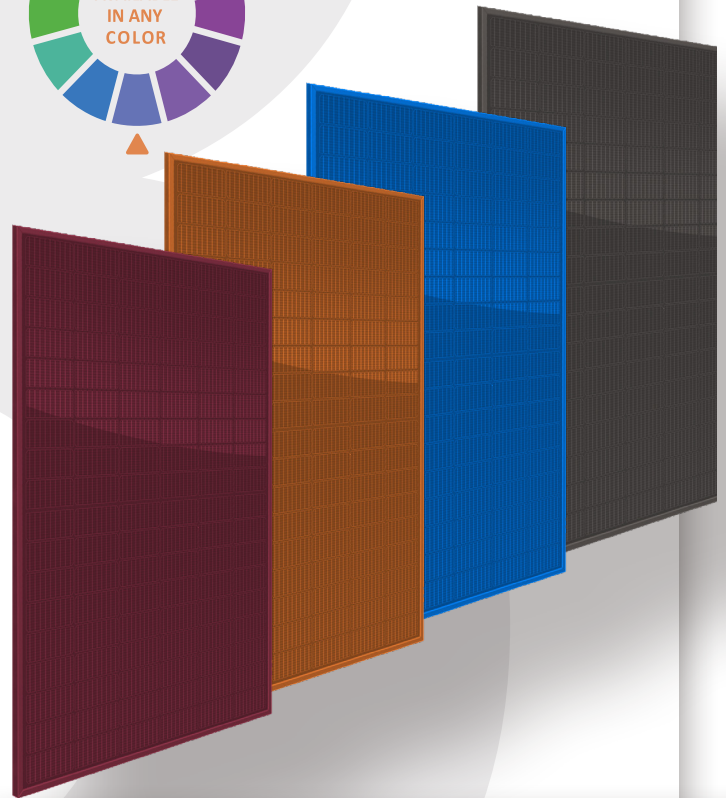


BIPV SERIES

BIPV COLORFUL SOLAR PANELS

GermanSolar BIPV Series design brings elegance to your building.

The design can be used in a wide variety of applications, such as facades, rooftops, canopies, parking structures, and balconies. The color and specifications can be customized according to your needs.



3 TYPES OF BIPV SPECIFICATIONS

These are available in a variety of colors, dimensions, thicknesses, and shapes to meet any project requirement.



Double Glass Series

Available in partial transparency or opaque options



See-Through PV Glass Series

A semi-transparent range of panels



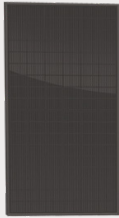


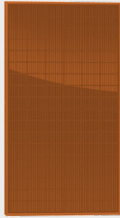
PV Colorshine (opaque) Series

Replacement for standard color-coated glass

APPLICATION SCENARIO



ELECTRICAL DATA*

Color	Gray	Blue	Red	Orange
Illustration				
Light Transmittance(%)	80			
Nominal Max. Power (Pmax)* (W)	350			
Open Circuit Voltage (Voc) (V)	38.30			
Short Circuit Current (Isc) (A)	11.50			
Max. Power Voltage (Vmpp) (V)	32.90			
Max. Power Current (Impp) (A)	10.65			
Module Efficiency (%)	17.92			
Power Tolerance (%)	± 3			
Power Temperature Coefficient γ	-0.34 % / °C			
Current Temperature Coefficient α	+0.04 % / °C			
Voltage Temperature Coefficient β	-0.24 % / °C			

*STC: Irradiance 1000 W / m², cell temperature 25 °C, AM = 1.5, Tolerance of Pmax is within + / - 3 %.

NOCT **

Color	Gray	Blue	Red	Orange
Nominal Max. Power (Pmax)* (W)	284.8			
Open Circuit Voltage (Voc) (V)	38.8			
Short Circuit Current (Isc) (A)	9.18			
Max. Power Voltage (Vmpp) (V)	33.50			
Max. Power Current (Impp) (A)	8.50			
NMOT (Nominal Module Operating Temperature) (°C)	41°C ± 3°C			

** NOCT: Irradiance at 800 W / m², ambient temperature 20 °C, Wind Speed 1 m / s. AM = 1.5.

MECHANICAL DATA

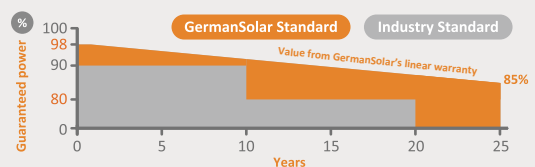
Dimensions (mm)	1722 x 1134 x 30
Weight (kg)	24.2
Solar Cells (mm)	Mono 182 x 91
Front Glass	2.0 mm glass
Back Glass	2.0 mm glass
Junction Box	IP68, 3 diodes
Cables	1200 mm in length (customizable) / UV resistant
Connectors	MC4 original / MC4 compatible

OPERATING CONDITIONS

Max. System Voltage (V)	1500
Operating Temperature (°C)	-40°C ~ +85°C
Max. Series Fuse Rating (A)	30
Front Side Maximum Static Loading (Pa)	5400
Rear Side Maximum Static Loading (Pa)	2400

LINEAR PERFORMANCE WARRANTY

12 Years Product Warranty | 25 Years Performance Warranty



PACKAGING

Panels Per Pallet (pcs)	36
Pallets Per Container (pcs)	26
Panels quantity per 40' container (pcs)	936